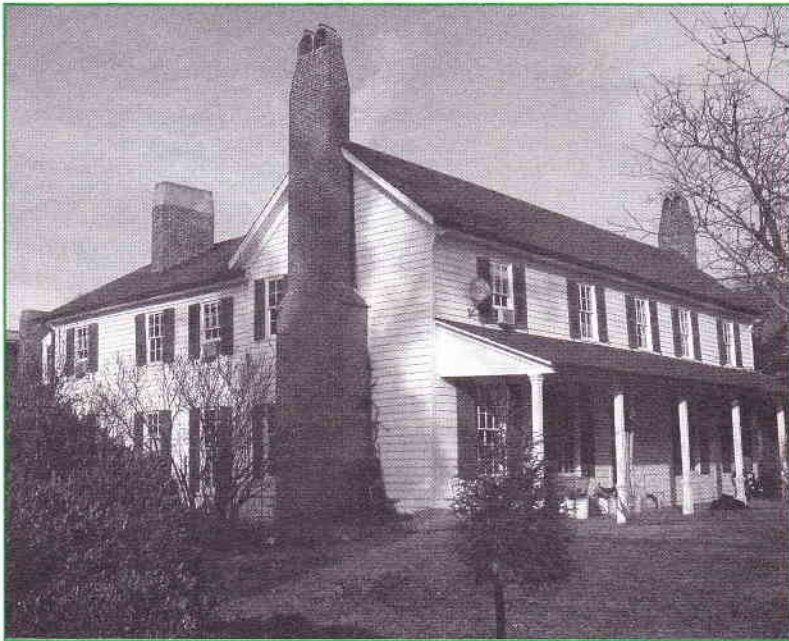


# Voices



VOL. 17, No. 1 • NEWSLETTER OF THE CLEVELAND PARK HISTORICAL SOCIETY • SPRING 2003



## *Rosedale Conservancy Seeks Neighborhood Input*

Many CPHS members may have received a survey from the Board of the Rosedale Conservancy in February seeking neighborhood input on how to develop guidelines for use of the Rosedale grounds.

The survey solicited neighbors' views on the Conservancy's top priorities (including priorities for restoring the historic character of the Rosedale landscape; restoring the health of the grass and trees; providing places for children to play, picnics, dog-walking; educational programs on Rosedale, hosting neighborhood gatherings and events). The survey also asked about use of the Rosedale lawns and whether there should be rules for dog-walking in Rosedale, including establishment of a dog registration program.

The Board of the Rosedale Conservancy has distributed newsletters to keep members and other neighbors informed about its accomplishments to date and what lies ahead as it tackles the job of husbanding Rosedale back to full health. Much has happened:

Rosedale efforts have included regulatory clearances and lawn restoration review. The purchase of Rosedale was accomplished by the end of September, aided by the Conservation Fund. The not-for-profit Rosedale Conservancy was established with the mission "to preserve, maintain, and, as appropriate, restore the natural and historic character of the Rosedale landscape, and, to the extent consistent with the foregoing, to facilitate public access to, and enjoyment of,

## *CPHS Annual Meeting*

This year, the CPHS annual meeting will be Wednesday, May 7th, 7:00-9:00 p.m., at the National Cathedral School, Lower School Assembly Room (entrance on 36th Street between Lowell Street & Woodley Road). Our speaker will be Lisa Burcham, the new Director of the D.C. Historic Preservation Office and our State Historic Preservation Officer. She will be introduced by Tersh Boasberg, founding president of CPHS and current Chair of the Historic Preservation Review Board.

If you ordered an historic marker for your house, it will be given out during the annual meeting.

### **NOTE ON MEMBERSHIP RENEWALS**

The CPHS membership year runs from May to May; a renewal notice will be sent out soon. The mailing label on the front of this newsletter will show when you last paid dues.

## *Inside*

The President's Letter.....	2
Calling All Volunteers.....	3
Personalities.....	4
CPHS Joins the 21st Century.....	4
For the Record.....	5
Cleveland Park Club Turns 80.....	6
Beautification Efforts.....	6
Community Calendar.....	6&7
Street Tree Preservation.....	7
Philip Stone Bequest.....	7
On the Avenues.....	8
Cleveland Park Garden Tour.....	9
ARC Activities.....	10
Historic Marker Program.....	11
The CPHS Reference Shelf.....	11

...continued on page 5

## *The President's Letter*

*by Thor Halvorson*

### **CPHS Board of Directors 2002-2003**

Andrew Aurbach  
Ordway Street

Alison Barr, Secretary  
Lowell Street

Roz Beitler  
Connecticut Avenue

Sarah & Ed Burger  
Woodley Road

Warren Clark  
Macomb Street

Robert Dubinsky  
Ordway Street

Michael Goldstein  
Lowell Street

Linda Greensfelder  
Newark Street

Thor Halvorson, President  
Lowell Street

Katy Harvey  
Porter Street

David Isaacs & Eileen Langholtz  
Ordway Street

John Kuhnle  
Newark Street

Margaret Lenzner  
Macomb Street

Susan Lynner  
Newark Street

Evan Miller  
Macomb Street

Ruthanne Miller, VP  
35th Street

Rick Nash, VP  
Newark Street

Amanda Ohlke  
Reno Road

Lois Orr, VP  
34th Street

Peggy Robin  
Ashley Terrace

Nancy Skinkle, Membership Chair & ARC co-chair  
Porter Street

Frank Stovicek  
Connecticut Avenue

Bonnie Temple, Treasurer  
Rowland Place

Serena Wiltshire  
Rowland Place

As we approach the summer respite and the end of another CPHS cycle, I thought I would just tick off, not necessarily in order of importance, a number of issues, ideas, and programs that CPHS has considered, or that we might consider, for the hoped-for greater good of Cleveland Park:

**NCRC Expansion.** This has been, and may continue to be, a warmly debated issue. To me and probably to most of us, it is regrettable and at least somewhat surprising that a common ground or compromise has not yet been found. The CPHS board, after expressing no objection to the architectural aspects of the proposal (in line with the ARC's position), considered the remaining issues and, in a closely divided vote, declined to support the NCRC expansion proposal unless and until it can be implemented so that the traffic situation is significantly improved.

**Kling Road.** The board addressed this long-pending (to some, long festering) issue at its meeting on March 11. After hearing presentations from both sides, the board voted to support an environmentally sensitive restoration of Kling Road for vehicular use. The board was influenced in part by the negative impact of increased traffic and traffic emissions on certain central streets (e.g., Porter, Macomb, Connecticut) in the historic district and by the possibility, and the inherent fairness, of having some of that traffic shifted back to the non-central streets such as Kling Road where it used to travel.

**Rosedale.** After working closely with Friends of Rosedale in the effort to preserve the Rosedale estate as we have known it, CPHS strongly endorsed the proposal that, slightly modified, formed the basis for the creation of The Rosedale Conservancy, a very important new neighborhood institution that is now up and running. The Conservancy is instituting a program for the restoration of the historic lawns that have been described as Cleveland Park's "village green." The Rosedale neighbors' determination, fundraising, and public-spirit- edness that made this possible have been nothing short of astounding.

**Beautification.** The CPHS beautification and trees committees, diligently chaired by Linda Greensfelder and Warren Clark respectively, are quietly and effectively stepping up our beautification programs and efforts. This has many aspects, including of course the care and replacement of street trees, and also including tree boxes, storefronts and windows, signage, and street lighting. With their and your help -- please don't be bashful about volunteering for this satisfying work -- Cleveland Park, already attractive, can and will become even more so. These are small things that have a way of adding up and of inspiring observers to make their own contributions to the effort.



**Garden and House Tours.** Elsewhere in this issue of Voices you will read about these upcoming events. They can be a pleasant diversion close to home on a Sunday afternoon and, not incidentally, be a source of ideas and inspiration for your own homes and gardens. Your participation, which helps to cover the costs involved and sometimes even produces a modest profit for CPHS, is encouraged.

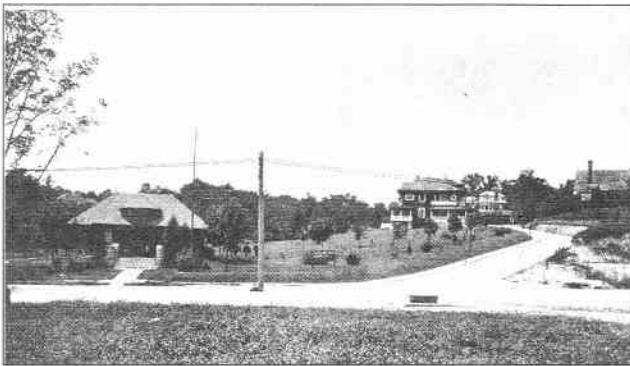
**CPHS Website.** CPHS board member Andrew Aurbach has been working hard for months to create a new CPHS website, which is described in more detail elsewhere in this newsletter. We expect that the website will become a new and vital source for information and discussion on Cleveland Park issues and resources.

**Endowment.** Through the generosity of Philip Stone, a long-time resident of Macomb Street, CPHS received under his will a bequest of more than \$30,000. The board, in the hope of prompting others to emulate Mr. Stone's splendid example, has voted to set aside the bequest as the beginning of an endowment rather than to spend it currently.

Absent an emergency, annual drawdowns from the fund will be limited to approximately 5 percent of the investment value, consistent with common endowment management practices. With prudent management, good luck, and continued generosity by residents, the endowment may grow and provide increasing support for CPHS programs. Needless to say, contributions earmarked for the endowment are welcome and will serve, we believe, a good cause.

**CPHS Governance.** To provide for greater board involvement and -- one hopes -- more in-depth and ahead-of-the-curve responses to emerging issues, CPHS now has three vice presidents: One for programs (currently Lois Orr), one for historic preservation issues (Rick Nash), and one for legal and regulatory affairs (Ruthanne Miller). Particular thanks go to them and to the other officers, executive committee members, board members, ARC members, and Judy Hubbard Saul, all of whom have shown a very heartening and public-spirited willingness to give thought, time and energy to numerous and sometimes demanding and difficult issues and programs, only some of which have been mentioned above.

Best wishes to all for a happy and healthy summer in Cleveland Park and wherever else you may be!



*the entrance to Cleveland Park in 1898*

### ***Calling all Volunteers: CPHS Plans Fall House Tour***

CPHS is planning a fall House tour; we'll send out details later.

If you would like to offer your home for the tour,  
or if you would like to help organize the house tour, please call CPHS  
Outreach Coordinator Judy Hubbard Saul at **202-363-6358**.





## Cleveland Park Personalities

by Judy Hubbard Saul



**GRACE HARING: Long-Time Ross Place Resident Looks Back on 58 Years in Cleveland Park**

Mrs. Grace Haring has lived on Ross Place since 1945. She was born on a farm, which is still owned by a family member, in Tiffin, Ohio. She graduated from high school at the age of 16 and came to Washington, D. C. in 1936 after business school to work in the newly-created Social Security Division of the Internal Revenue Service. She lived with other professional women in small apartments and boarding houses and was able to save money on her modest secretarial salary of \$1,260 a year. She and some of her girl friends splurged and went to New York City one weekend. The train, the hotel, the sightseeing, the film at Rockefeller Center, the food at the Automat, the entire weekend all cost a grand total of \$16, but that king's ransom of extravagance was well worth it!

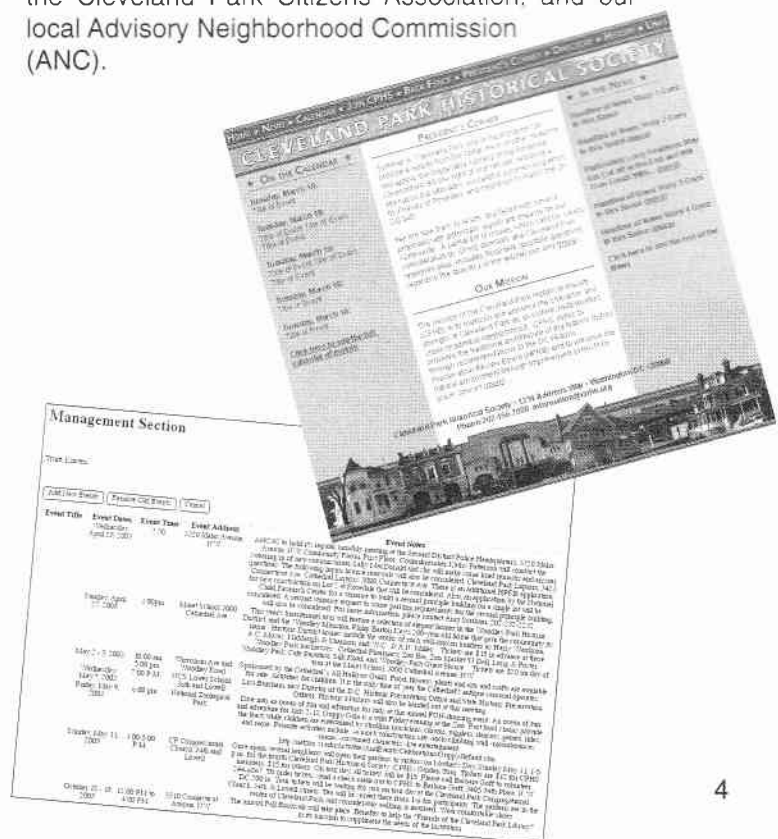
She met Tom Haring, a tax law specialist for the IRS, at a bowling tournament. They were married in November 1945 in the rectory of St. Thomas Apostle Church in Woodley Park and had their reception in the Ross Place house. The house was built in 1906. Grace Haring's in-laws bought the house in August 1925 when Tom was eleven. Tom and his two brothers, Frank and Bill, attended John Eaton and grew up playing in the many vacant lots in the neighborhood and nearby Tregaron. Tom even delivered newspapers to Mr. and Mrs. James Parmalee, the original owners of the Tregaron estate, which they called The Causeway. The Haring family was friends with Mr. and Mrs. Philip Stone who lived around the corner on Macomb Street. (See related story on the Stone Bequest to CPHS elsewhere in this newsletter.)

Grace and Tom had three children, two daughters and a son. At one time, their family, one of Tom's brothers and the elder Mrs. Haring all lived together in the Ross Place house. Grace and Tom's children went to John Eaton as well. Grace Haring remembers how convenient everything was and still is. The public school and the playground were just up the hill, and the stores along Connecticut and Wisconsin Avenues supplied all her needs. She shopped at the five and dime store at the corner of Ordway and Connecticut and the Giant Food where Ireland's Four Provinces stands today. The present library was once a small park with benches. Everything was so convenient that she never learned to drive a car. She said much has changed in the 58 years she has lived here, but much in Cleveland Park is still the same.

## CPHS Heads Into the 21st Century With New Website

CPHS member Andrew Aurbach is spearheading efforts to create a new CPHS website, which should be up and running soon. As planned, the website at [clevelandparkdc.org](http://clevelandparkdc.org) includes a history of the development of Cleveland Park and the creation of the Cleveland Park Historical Society, including Cleveland Park's designation as an Historic District in November 1986, its inclusion on the National Register of Historic Places in April 1987, and creation of the Architectural Review Committee (ARC) in 1987. The site features background information on CPHS efforts to help preserve Tregaron, Rosedale, and the Park and Shop, and to rehabilitate Macomb Playground (the ROMP project). The website also contains information on zoning and other issues helpful to securing permission to renovate neighborhood structures, a community calendar and news section. There is also a message board which will enable CPHS members to weigh in on neighborhood issues and to contact different CPHS committees, including the ARC, the Voices newsletter, and CPHS efforts involving beautification, tree planting, and house and garden tours.

The website offers CPHS membership forms and purchase forms for CPHS historic markers and Cleveland Park: A Guide to Architectural Styles and Building Types, maps with sites of local interest (Rosedale, Oak View, Twin Oaks, Tregaron, Hillwood House), listings of local merchants, and links to the neighborhood and city wide resources, in keeping with the CPHS mission, such as the Historic Preservation Review Board (HPRB), the Rosedale Conservancy, the City Museum of Washington, the DC Heritage Tourism Coalition, the Cleveland Park Citizens Association, and our local Advisory Neighborhood Commission (ANC).



# **FOR THE RECORD:**

## **CPHS Board Resolutions on NCRC & Klingle Road**



At its February and March monthly meetings, the CPHS Board approved two resolutions addressing important neighborhood issues, which Voices reprints here:

The CPHS Board resolution on the National Child Research Center expansion plans, signed by Thor Halvorson, CPHS President, was approved February 4, and sent to Mr. Geoffrey Griffis, Chairman, Board of Zoning Adjustment:

*On February 4, 2003, after hearing presentations from interested parties, including NCRC, Cleveland Park Neighbors and Friends of NCRC, and after extended discussion, the board of directors of the Cleveland Park Historical Society, by a vote of 9 in favor and 7 opposed, adopted the following resolution with respect to the above-referenced application, with instructions that the text of the resolution be transmitted to your office:*

*RESOLVED, that the Cleveland Park Historical Society opposes the application of the National Child Research Center now pending before the District of Columbia Board of Zoning Adjustment unless it is implemented so that the current traffic situation is significantly improved.*

The CPHS Board resolution addressing Klingle Road, signed by CPHS Vice President Lois Orr, was approved March 11 and sent to Linda W. Cropp, Chairman of the Council of the District of Columbia, with copies to the other Council members:

*On March 11, 2003, after hearing presentations from interested parties, including the Klingle Valley Park Association and the Coalition to Repair and Reopen Klingle Road, and after extended discussion, the board of directors of the Cleveland Park Historical Society, by a vote of 10 in favor and 3 opposed, adopted the following resolution in support of restoring and reopening Klingle Road as a public roadway consistent with its historical purpose and cross-town design:*

*RESOLVED, that the Cleveland Park Historical Society supports an environmentally sensitive restoration of Klingle Road for vehicular traffic in accordance with the original Frederick Law Olmstead, Jr. plan.*

## **Rosedale**

*...from page 1*

and education about Rosedale in a manner that enhances the Cleveland Park Community." The 13-member interim Board of the Rosedale Conservancy represents neighbors on all four sides of Rosedale and beyond, as well as representatives of CPHS, the Cleveland Park Citizens Association, and the ANC. The interim Board will serve until the membership elects a new Board at the Annual Meeting in June 2003.

In October, the DC Historic Preservation Review Board unanimously approved the subdivision plan for the estate, permitting the division of the property between the Conservancy and the homeowners, as did the Mayor's Agent in January. Large Tract Review requirements, required by the DC Office of Planning, including an archaeological survey, have been met, and OP approved the project in March, finally clearing the regulatory hurdles for the two entities. The Rosedale Conservancy can now focus on the stewardship of the lawns, while the new owners of building lots on the Ordway Street frontage will focus on their building plans.

Accomplishing the complex subdivision has been challenging. It was necessary to seek City Council legislation to secure a property tax exemption for the Conservancy property, since there is no provision in DC law for privately-held open land. The Conservancy had to finalize a Conservation Easement, to be held by the Potomac Conservancy, to protect the historic lawns in perpetuity, with appropriate stewardship and usage plans.

At the same time, the Conservancy Board has addressed the immediate issues of grounds improvement and maintenance. Dead trees to be removed have been identified, and a thorough fall cleanup took place in December. Tree removal was delayed by the winter snowstorms, but will occur in the Spring, along with aeration and seeding of the lawns. More substantive lawn restoration work will take place in the fall of 2003. The Conservancy is also interviewing landscape architects who are experienced in historic landscapes to guide a long-term vision for the grounds.

The Rosedale Conservancy is now established, and looks forward to providing the community with an extraordinary green space in perpetuity. The Rosedale Conservancy, a membership organization, can be reached at [rosedaleconservancy@verizon.net](mailto:rosedaleconservancy@verizon.net). Please let them know of your interest and concerns.

Northside owners progress. The owners of building lots on the north side of the estate have been engaged on a parallel course with plans for new houses. Like the houses on 34th Place that were built on the east side of Rosedale early in the 20th Century, these new houses will provide a neighborhood streetscape on Ordway Street, the northern side of the estate. Designs for 5 new houses, four facing Ordway and one on a large lot adjacent to the farmhouse to the west, were approved by CPHS's Architectural Review Committee, the ANC and DC's Historic Preservation Review Board in February. Three other lots, two fronting on Ordway and one east of the farmhouse fronting the Conservancy, may be built on with design approval by the HPRB. These new houses will occupy much less space than the dormitory buildings and parking lot, which will be demolished this Spring.

## *Cleveland Park Club to Fete 80<sup>th</sup> Birthday on May 31*

Get out your cloche hats, beads, boas and fedoras! The Cleveland Park Club is 80 years old this year! Members old and new should look for invitations in the mail soon to a swell Roaring 20's Dance.

**Date:** Saturday, May 31, 2003 at 8:30 pm. (This is the week following Memorial Day weekend)

**Place:** CPC, of course

Desserts and champagne will be served, and guests are invited to bring alternative libation, if they prefer.

Costumes are strongly encouraged! Vic Daumit, who has run the Vic Daumit Dance Studio on Connecticut Avenue since 1954, will be on hand to teach The Charleston and other popular dances of the 20's. Prizes will be awarded for best costumes and most spirited dancers.

The cost is \$30 per person, with checks payable to Cleveland Park Club, c/o 3230 Highland Place, NW, Washington, DC 20008.

Anyone who knows how to contact former members who have relocated, and should be invited, and/or people who are available to help with plans should contact Chairperson, Laine Shakerdge Kaufman at 202-362-6812, or preferably, at [laine.shake@verizon.net](mailto:laine.shake@verizon.net). Underwriters for various aspects of the gala will be greatly appreciated. Please call Laine Kaufman if you're feeling even a twinge of generosity. Contributions large and small will help make this special. And the Cleveland Park Club can acknowledge you in ways you'll like.

## *Beautification Efforts Target Connecticut Avenue Streetscape*

CPHS Beautification Volunteer Linda Greensfelder reports that the spring initiative of the CPHS Beautification Committee is to work on improving the streetscape along Connecticut Avenue. To this end, the Committee is exploring the possible installation of more benches along the Avenue and banners on the street lamps along Connecticut between Macomb and Newark Streets. The banners would promote the historic district and add an attractive element along the Avenue. The Committee is continuing the Adopt-a-Tree-Box program. This program encourages individual residents or merchants to be responsible for improving a city tree box with mulch and plantings. Neighbor Catherine Armington has tackled the two large tree boxes between Newark and the Four Provinces. Owners of the Four Provinces, Uptown Vision, and Transcendence Perfection Bliss of the Beyond have assumed responsibility for improving the tree boxes adjacent to their businesses. More work needs to be done in this area, and residents are encouraged to call Linda Greensfelder at 244-5242 or [linda.greensfelder@verizon.net](mailto:linda.greensfelder@verizon.net), if you would like to help with this undertaking.

The Committee has identified a number of other projects in the neighborhood, from landscaping the triangle at 34th and Ordway to installing more historic signage in the neighborhood.

## *Community Calendar:*



### **Woodley Park House Tour**

Sponsored by the Woodley Park  
Community Association

**Sunday, April 27, 1:00-5:00 p.m.**

**Tickets \$15 in advance, \$20 day of tour**

Tickets sold at Cathedral Pharmacy & Zoo  
Market across from the entrance to the Zoo

Starting location: Maret School,  
3000 Cathedral Avenue

For more information contact:

**Martin Murray 667-0105**

### **John Eaton School**

**10th Annual John Eaton Auction**

**Saturday, May 17, 6-10pm**

Carnegie Institute - 1530 P Street, NW

Help Us Celebrate

Alumni and Alumni families  
encouraged to attend.

Would you like an invitation?

**Contact: Trish Berman 363-3949**

**[trishberman@hotmail.com](mailto:trishberman@hotmail.com)**

**Plant Sale to benefit the John Eaton  
After School Program**

At the school

**Friday, April 25th, 3:00-6:00 p.m.**

**Saturday, April 26th, 10:00-4:00 p.m.**

### **CPHS Garden Tour**

**Sunday, May 11th, 1:00-5:00 p.m.**

See details on page 9 of this issue.

**Cleveland Park Club 80<sup>th</sup> Anniversary Party**

**Saturday, May 31, 8:30 p.m.**

See details at the top of this page.

## *CPHS, City, and Casey Tree Foundation Focus on Street Tree Preservation*

Many thanks to long-time CPHS member Warren Clark who has worked tirelessly over the last several months on tree preservation and restoration efforts in Cleveland Park. Warren participated in last summer's Casey Tree Endowment Fund survey of "street" trees (trees between the sidewalk and the street) in the District and has prepared a brochure on street tree preservation in Cleveland Park with CPHS beautification volunteer Linda Greensfelder. Here is Warren's update on the street trees effort in Cleveland Park and the District.

There is considerable activity underway to maintain and improve street trees in Cleveland Park and in Washington.

The District Government now has money to plant or replace street trees. The city has planted over 100 new trees in Cleveland Park over the last three years. This work will continue.

There is a separate Federal government contract with a firm called VMS for maintenance on Connecticut and Wisconsin Avenues, including street trees and tree boxes. VMS has agreed to replace four dead, dying or missing trees between Porter and Klinge on Connecticut Avenue, including the missing tree in front of Starbucks and the dying tree in front of Supercuts.

The GCA (Garden Club of America) Casey Tree Foundation is also carrying out a comprehensive survey of trees in the District and is developing recommendations for urban forestry policies for DC.

The GCA Casey Tree Foundation plans to make a presentation in Cleveland Park this spring on its progress and plans so far.

Look for a CPHS brochure on how residents can help replace and protect street trees, which will include tips on mulching and watering street trees, as well as how to order street trees from the DC Government.

## *Philip Stone Bequest*

CPHS is most grateful to Philip Stone for his bequest of \$33,214, which we received in installments from 1999 to the present. The funds have been invested and have enabled CPHS to establish its first endowment. Philip Stone was born in the 3300 block of Macomb in 1907. He lived his entire life in that house until his death in December 1997. In an interview with Mr. Stone by Rives Carroll in the spring 1989 issue of Cleveland Park Voices, Mr. Stone said his parents moved into the house in May of 1906 just after it was completed by the Cleveland Park Company, the first developers of the neighborhood. His early days growing up were filled with playing in the many vacant lots in Cleveland Park and walking with his father in Rock Creek Park and the Zoo. His love of the outdoors stayed with him all his life. He joined the Potomac Appalachian Trail Club in 1936 and was active in the Boy Scouts of America for 68 years. His life-time career was working for the D. C. Library starting during the Depression as a part-time employee at night at the Mt. Pleasant branch and ending with his retirement in 1972 as the Coordinator of Adult Services. Mr. Stone told Mrs. Carroll he had done "almost everything in the library system" except work at the circulation desk. We are most grateful for this unexpected gift from a life-long resident of Cleveland Park.

## *Community Calendar: (cont'd)*



### **Washington International School's Middle School production of "Bye Bye Birdie"**

The musical, directed by Larry Vincent, will be performed in the Auditorium on Tregaron Campus, 3100 Macomb St NW, May 8 to 11, 2003. Performances are:

**Thursday, May 8, 7:30 p.m.**

**Friday, May 9, 8 p.m.**

**Saturday, May 10, 8 p.m.**

**Sunday, May 11, 4 p.m.**

Tickets are \$6.00 for general admission, \$4.00 for senior citizens and non-WIS students, and free for WIS students and faculty with a ticket.

For general information call (202) 243-1800 Monday through Friday from 8 a.m. to 4 p.m.

Adas Israel Congregation presents **An American Symphony, Symphony No. 3**, by Arnold Saltzman,

**Sunday, June 15, 7:30 p.m.**

at the Clarice Smith Performing Arts Center, University of Maryland.

**For tickets, call 202-362-4433, x147, or 301-405-ARTS.**

### **Connecticut Avenue Walking Tour**

Some months back, there was a discussion on the Cleveland Park list serve of what was so historic about our Connecticut Avenue commercial corridor. Join Judy Hubbard Saul, the Outreach Coordinator for CPHS, for a walking tour on Sunday, May 18th, from 2-3:30 p.m. and find out why that area is nationally recognized in preservation circles. Tour is limited to 15 people.

**\$5 for CPHS members and \$10 for non-members.**

Checks should be made out to CPHS and mailed to CPHS, P. O. Box 4863, Washington, D.C. 20008. Starting location will be on your ticket.

## *On The Avenues: News From the Outreach Coordinator*

*by Judy Hubbard Saul*



Since last fall's newsletter, a fitness center has opened on our western commercial corridor and a hair salon and three restaurants have opened on our eastern commercial corridor. What is particularly interesting is that three of the five new establishments are franchises. Two of the franchises are the first of their kind in Washington, D. C., and two of the franchises are top-rated by Entrepreneur magazine. Read on to find out which is which!

**Hair color xpress**, opened at 3504 Connecticut Avenue across the street from the Park and Shop on September 25th. The stylishly modern two-level salon specializes in color, cuts, and custom blend make-up for busy women and men. Computer cyber imaging is also available, allowing the client to actually see the color and cut before its done. The busy professional will appreciate the salon's extended hours and the ability to blow dry one's own hair after the cut or color. The color and the cut are done by different specialists. Owner Sonal Roy told me that hair color xpress was founded two years ago in Florida, and now there are 15 salons on the East Coast. Ms. Roy, a stylist for the past 9 years, did a marketing survey and chose Cleveland Park, which right now is the only hair color xpress in D. C. By appointment or walk-in. (Open 7 days a week: Monday and Tuesday 11:00 a.m.-9:00 p.m.; Wednesday-Saturday 9:00 a.m.-9:00 p.m.; Sunday 12 noon-6:00 p.m.); telephone 349-0200; fax 349-0204; e-mail [cleveland36@haircolorxpress.com](mailto:cleveland36@haircolorxpress.com).

**The Subway Restaurant**, which opened on December 19th, at 3520 Connecticut Avenue, may be tiny with only two small tables for two but it was busy the day I had lunch there. Outdoors there is seating for 16 people. Manager Jason Lee told me that Subway is the largest fast food franchise in the U.S., overtaking MacDonald's in 2002. It has received the top spot in the magazine Franchise 500 for the 11th time in a row. Subway is unique in that it is still privately-owned and its founder, Fred DeLuca, still runs the day-to-day operations. While I was there I noticed Subway had promotions with three of our neighborhood merchants, Blockbuster, the Uptown Theater, and hair color xpress. There also was a brochure endorsed by the American Heart Association noting the nutritional value of Subway's selections. (Open Sunday-Thursday 10:00 a.m.-10:00 p.m.; Friday and Saturday 10:00 a.m.-midnight); telephone 237-2424; fax orders 237-8886.

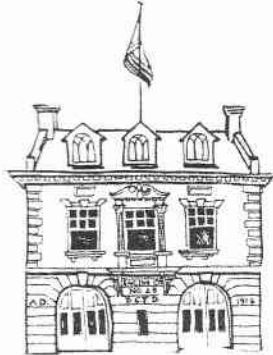
**Indique**, the new Indian restaurant at 3512-14 Connecticut Avenue, opened on December 26th. One must enter the restaurant to appreciate how this small space has been transformed. The restaurant seats 104 and most of the seating is upstairs. Nandita Sanotra, an interior designer and wife of manager Harry Sanotra, imported everything directly from India. The fabrics, the pierced marble railings, the table and

artwork with semi-precious stones, the antique chandelier, and the canvas wall hanging on the first floor are stunning. Co-owners Kottapurath Vinod, who is also the chef, and Surfy Rahman wanted to expand into the District to complement their restaurants in Rockville and Fairfax, under the names Bombay Bistro, which they have owned and operated for 11 years and more than 7 years respectively. The menu is different than the other two restaurants, with lots of small plates, regional specialties, fun cocktails, and a more upscale presentation. (Open Sunday-Thursday, 12 noon-3:00 p.m. and 5:30-10:30 p.m.; Friday and Saturday 12 noon-3:00 p.m. and 5:30-11:00 p.m.); telephone 244-6600, fax 244-6603, [indique.com](http://indique.com). Carryout is available 7 days a week and soon they will offer delivery service.

From the outside **Bricks Tavern**, which opened on November 21<sup>st</sup> at 3421 Connecticut Avenue, may look like a bar, but it's really a neighborhood family restaurant. Chong Yi, the owner of Bricks Tavern as well as Park Bench Pub around the corner, says Bricks appeals to customers of all ages, while Park Bench Pub is more of a sports bar for the younger professional crowd. Chong, a University of Maryland graduate, likes the diversity of people in Cleveland Park and only wishes he could reside here instead of Rockville. All the food is cooked in the brick ovens installed by the previous owners, including the pizzas and "wood oven roasted subs." Besides the subs and pizzas, there is a large selection of starters and pastas, all moderately priced. There also is outdoor roof-top dining and a bar as well. (Open Sunday - Thursday, 12 noon - 1:30 a.m.; Friday and Saturday 12 noon - 2:30 a.m.); telephone 362-8440; fax 362-8044.

**Curves**, a 30-minute fitness and weight loss center for women, at 3414 Idaho Avenue, opened on January 6th. Curves is the number one fitness franchise and the number one fastest growing franchise according to Entrepreneur magazine. The owner is long-time Cleveland Park resident, Elvi Moore, who for 16 years was the General Director of the Washington Ballet Company. Elvi tried the fitness routine at a Curves center on a visit to Minneapolis, MN, last July. The routine was fun, fast, safe, and it worked for her, and by September she had signed up for a franchise. Cleveland Park Curves is the first franchise in D. C. Next month Elvi will be opening a second Curves in Bethesda, and Janie Hulme will be manager. You will recognize another familiar face at our Curves, Belinda Lee, who worked with Janie at the Cleveland Park Bookshop. Membership in Curves is by month or by the year. (Open Monday through Friday 7:00 a.m.-1:00 p.m. and 4:00-8:00 p.m.; Saturday 8:00 a.m.-12:00 noon; closed on Sunday); telephone 237-6680; fax 237-2289; e-mail [curvesdc@acninc.net](mailto:curvesdc@acninc.net).





CLEVELAND PARK HISTORICAL SOCIETY

PO BOX 4862

CLEVELAND PARK, D.C. 20008

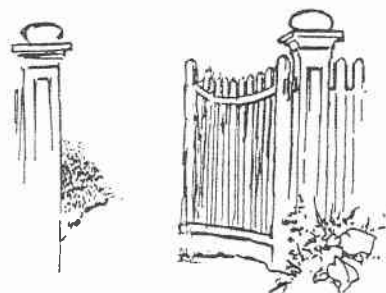
(202)363-6358

## ***CLEVELAND PARK GARDEN TOUR***

**Sunday, May 11th (Mother's Day)**

**1:00-5:00 p.m.**

**\$10 CPHS members/\$15 non-members**



Cleveland Park: a retreat from the monotonous flatness of the downtown, laid on ridges and rills that still trickle down to Rock Creek, a varied menage of the small and grand on slopes, valleys, cul-de-sacs, and quiet streets where one can create a garden refuge and disbelieve there is a city nearby. L'Enfant and Washington once sat on a porch here and dreamed of the grandeur to come in the lowlands beyond.

In this, the fourth Cleveland Park Garden Tour, you can peek into these refuges and see the many ways one can escape the cacaphony of the city by creating a garden. One gardener will display her sculpture along winding paths. Two adjoining gardens were planned and planted to complement each other. Each retains a feeling of privacy. Three are constructed with areas set aside for children's play. Two gardens are relatively new, others have plant material older than their owners.

Refreshments will be served at the Cleveland Park Congregational Church, 3400 Lowell Street, between 1 and 6 p.m. You will pick up your tickets there.

The tour benefits the Cleveland Park Historical Society (CPHS).

**For more information, call CPHS, 363-6358.**

**Order tickets today !**

Name(s): \_\_\_\_\_

Address: \_\_\_\_\_

Telephone: Day/Evening: \_\_\_\_\_

Please reserve \_\_\_\_\_ ticket(s) at \$10each / \$15 each (circle one).

Enclosed is a check to CPHS for \$\_\_\_\_\_.

Mail to Barbara Goff, 3405 34th Place, N.W., WDC 20016. Our membership year is from May 2003 to May 2004. Membership in CPHS is \$35 for individuals and \$50 for households.

# *Architectural Review Committee's Winter & Spring Activities*

*by Nancy Skinkle, ARC CO-CHAIR*

In the near future, Rosedale will be undergoing some changes. The Historic Preservation Review Board (HPRB), along with the Cleveland Park Historical Society's Architectural Review Committee (ARC), has approved the subdivision of this large tract of land bordered by Newark Street on the south and Ordway Street on the north. There are now six new building lots on Ordway Street plus the existing cottage located near the east end of the site. On the Newark Street side, there are two new lots – one on either side of the existing farmhouse. To date, the CPHS, ARC and HPRB have approved conceptual designs for five new houses on Lots #1, #3, #4, #5 and #8. Also approved are minor renovations to the farmhouse. These projects will continue developing and will most likely be reviewed in the near future by the ARC.

Along with the subdivision, HPRB has approved an overall landscape/hardscape plan. This plan outlines several common elements that help bind the site together and will be shared by all future homeowners. On Ordway Street, a two-foot high stone wall will help retain the earth on this steep slope as well as unify the streetscape. Also on Ordway, a new five-foot concrete sidewalk will be added along with a five foot

planting strip between the new sidewalk and curb. At this time, the existing Norway Maples that are declining on the south side of Ordway Street are scheduled to be removed and replaced with nine new Norway Maples.

The entry drive from Newark Street will keep its present size and location and will wind up to the development terminating at the farmhouse. This drive will be the access for lots #1, #2, #3, #4, #8 and #9. A new driveway off of Ordway between lots #5 and #6 will provide access to lots #5, #6, and #7. The Newark street drive will be repaved in asphalt and have a 16" border of flush granite cobblestones for a total width of 15'. As this drive extends up to the development, there will be a few parking areas serving the homes all paved with cobblestones. The pavement design for the Ordway entry drive is still in process.

Another common element shared by all Rosedale homeowners is a new private clay tennis court. The court will be hidden behind a stucco wall and will front Ordway Street between lots #4 and #5. The court will be depressed three feet and have a seven-foot high privacy wall around the entire court. This wall will be mostly stucco but will also have panels of vertical cedar planks. No exterior lighting is planned for this court.

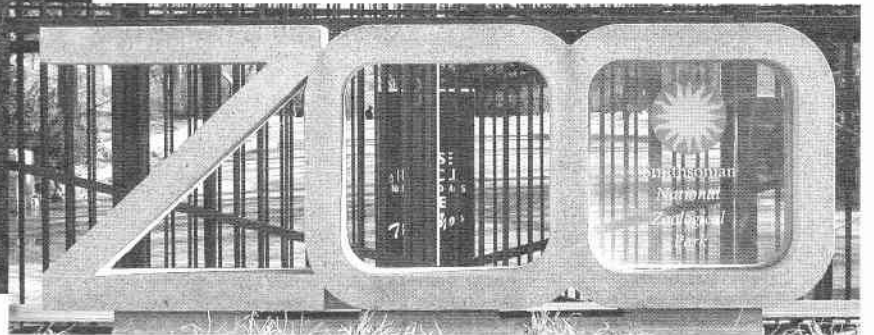
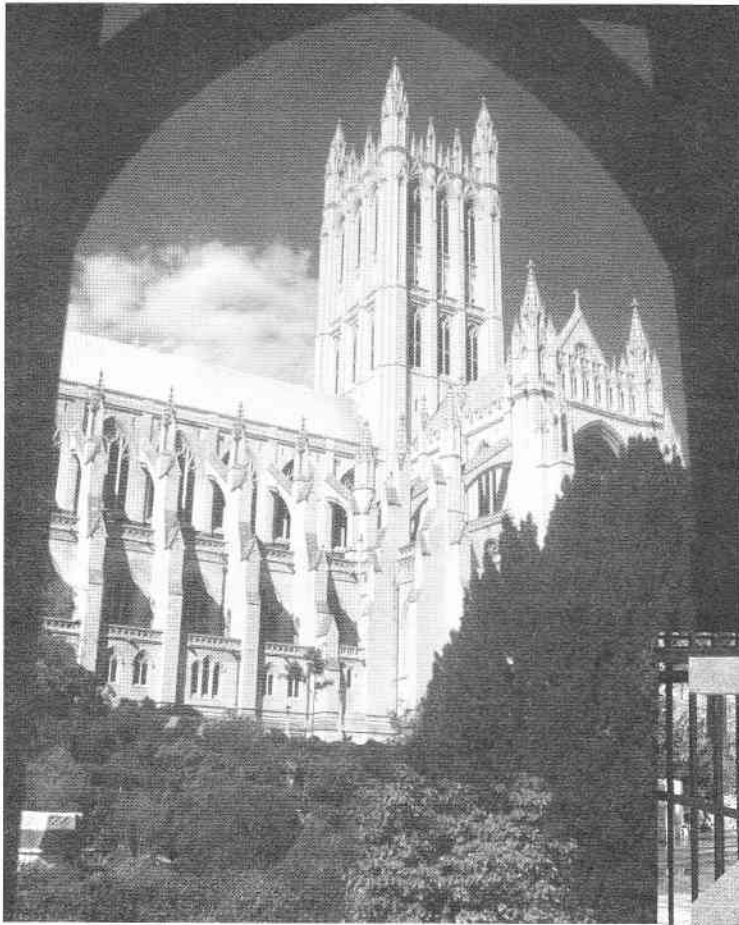


*the gardens at Rosedale*

The ARC would like to remind everyone that its meetings are held on the second Monday of each month (assuming pending building permits) at 7:30 pm. These meetings are open to the public but all deliberations are done privately. You can hear the monthly list of projects by calling the Cleveland Park Historical Society at 202-363-6358.

---

**CLIP & MAIL TODAY TO GET YOUR TICKETS FOR THE CLEVELAND PARK GARDEN TOUR!**



### *Historic Marker Program*

To educate the community to the age of various structures within the historic district, CPHS sells 5 x 7 inch solid brass oval plaques. Each plaque bears the structure's date of construction and the words "Cleveland Park Historic District." Structures listed on the original National Register nomination form are immediately eligible for recognition. To find out if your home/building is listed, call Steve Cohen at 234-7954 or email [SLCMVM@Starpower.net](mailto:SLCMVM@Starpower.net). Structures 75 years or older are also eligible with documentation verifying the age. Submit a copy of the original deed, tax bill, utility bill, or other official document attesting to the age of your structure. Markers are \$100 for CPHS members and \$135 for non-members. Orders for markers are taken any time during the year, but due to fabrication and shipping costs, plaques will be ordered in bulk. CPHS will send a letter confirming that your structure is eligible and the approximate delivery date. Markers come with installation instructions.

Name \_\_\_\_\_

Structure Address \_\_\_\_\_

Year Structure Was Erected \_\_\_\_\_

Architect (if known) \_\_\_\_\_

Telephone \_\_\_\_\_

Email \_\_\_\_\_

Checks should be made out to **CPHS** & mailed to CPHS, P.O. Box 4862, Washington, D.C. 20008.

### *The CPHS Reference Shelf*

Cleveland Park: A Guide to Architectural Styles and Building Types is a 1998 publication developed by CPHS with support from the National Trust for Historic Preservation and written by Cherrie Anderson and Kathleen Sinclair Wood, with drawings by John Wiebenson.

Tregaron: A Magical Place by Kirstine Larsen is a new publication by a long-time Washington International School employee.

Please send me:

- \_\_\_\_\_ copy/copies of the Style Guide  
\$8 (CPHS members); \$12 (non-members)
- \_\_\_\_\_ postage & handling  
one copy \$3 ; add \$1 for each additional copy
- \_\_\_\_\_ copy/copies of Tregaron: A Magical Place  
\$16 (CPHS members); \$22 (non-members)
- \_\_\_\_\_ postage & handling  
\$4 each copy
- \_\_\_\_\_ **TOTAL**

Name \_\_\_\_\_

Address \_\_\_\_\_

City, State, Zip \_\_\_\_\_

Checks should be made out to **CPHS** & mailed to CPHS, P.O. Box 4862, Washington, D.C. 20008.

## *Join the Cleveland Park Historical Society*

CPHS was founded in 1985 by concerned residents seeking to prevent overdevelopment of Cleveland Park's commercial corridors and to preserve the character of this historic neighborhood. It continues to be active in preservation, beautification, public education, and community betterment. To join us in this work, please send this coupon, along with a tax-deductible contribution, to:

Nancy Skinkle, Membership Chair  
Cleveland Park Historical Society  
P.O. Box 4862  
Washington, D.C. 20008

Please make checks payable to the Cleveland Park Historical Society. Many employers provide matching grants for employee contributions to qualified 501 (c)(3) tax-exempt organizations. If your employer does so, please consider including your employer's matching grant form with your contribution.

*Thank you!*



***Cleveland Park Historical Society***  
***PO Box 4862***  
***Washington D.C. 20008***  
  
***(202)363-6358***

***Yes!*** I wish to: ☐ join ☐ renew my membership in CPHS at the following level:

- |  |   |
|--|---|
| <input type="checkbox"/> \$35 Individual | <input type="checkbox"/> \$250 Patron   |
| <input type="checkbox"/> \$50 Household  | <input type="checkbox"/> \$500 Angel    |
| <input type="checkbox"/> \$100 Sponsor   | <input type="checkbox"/> Other \$ _____ |

Name (please print) \_\_\_\_\_

Address \_\_\_\_\_

City, State & Zip Code \_\_\_\_\_

Daytime phone \_\_\_\_\_

Evening phone \_\_\_\_\_

E-Mail Address \_\_\_\_\_

- ☐ Architectural Review Committee (ARC)
- ☐ Beautification
- ☐ House & Garden Tours
- ☐ Mailings
- ☐ Membership
- ☐ Newsletter
- ☐ Tree Planting
- ☐ Other \_\_\_\_\_
- ☐ I am interested in being considered for the CPHS Board of Directors as openings become available

NON-PROFIT  
ORGANIZATION  
U.S. POSTAGE PAID  
WASHINGTON, D.C.  
PERMIT NO. 1415