



CLEVELAND PARK

Voices

VOL. 13, NO. 1 • NEWSLETTER OF THE CLEVELAND PARK HISTORICAL SOCIETY • SPRING 1999

UPCOMING EVENTS



SPRING GARDEN TOUR

Sunday, May 9th
1-5 p.m.
Self-guided tour of
Cleveland Park gardens
Maps and tea at
Cleveland Park Church
3400 Lowell Street, N.W.
(See story on page 4.)

COME ONE! COME ALL!

Cleveland Park Historical Society ANNUAL MEETING

Celebrate the renovation of
Macomb Playground
Wednesday, May 12th
7:00 p.m.
Macomb Playground
Macomb and 34th Streets, N.W.
Refreshments following at
3465 Macomb Street, N.W.
For more information,
call Judy Hubbard Saul,
(202)363-6358.

IN THIS ISSUE

President's Note	2
Macomb Playground Update	3
Web Sites Worth a Visit	3
CPHS Garden Tour	4
Reader's Query	4
NCS Athletic Facility	5
Heritage Tourism	5
Note Cards Available	6
Style Guide	6
Cleveland Park Club at 77	6
Philip Stone Bequest	7
Preservationists are Coming	7
Community Calendar	7
Join the CPHS	8
Cleveland Park Day Update ...	8

RESEARCH DETAILS NATIONAL IMPORTANCE OF TREGARON GROUNDS

HISTORIC PRESERVATION CONSULTANT ROBINSON AND ASSOCIATES HAS nearly completed the historical study of the Tregaron estate commissioned last spring by the Friends of Tregaron and paid for by the Cleveland Park Historical Society. Their research confirms the national significance of both house and grounds, which, in accordance with the principles of American Country House design current in 1912, were planned as a unified whole, each complementing the other. The Robinson report will provide invaluable historical ammunition should Tregaron, one of the few remaining undeveloped properties in the District, face a serious threat of subdivision or overdevelopment.

Among the findings in the report are accounts of the house and grounds in period books and magazines. The examples here, which accompany an excerpt from the report's discussion of the property's significance, evoke the picturesque atmosphere that characterized Tregaron in its heyday. The quotations (in italics) come from a book by Samuel Howe, *American Country Houses of To-Day*, that was published by Architectural Book Publishing in 1915. The accompanying photographs, taken in about 1920, were found at the Library of Congress in a collection of the work of noted photographer Frances Benjamin Johnston.



The Causeway, c.1920

"[The house was] approached by means of a well-constructed road, a bridge in fact . . . spanning the brook near the entrance. The roadway has been so skillfully contrived that while it passes through the wood, giving delightful little surprises at unexpected angles, it has not entailed the sacrifice of any of the trees."

FRANCES BENJAMIN JOHNSTON COLLECTION, LIBRARY OF CONGRESS, PRINTS AND PHOTOGRAPHS DIVISION (ALL)

(continues on page 2)

PRESIDENT'S NOTE

Traditionally, local historical societies concern themselves with matters of historic preservation, historical research, and education. Yet CPHS finds itself drawn increasingly into a broader sphere. More and more we are occupied with problems of planning, traffic, parking, trash, and relations with many other organizations in the city—areas of concern that are usually addressed by resident associations.

If CPHS is to function as an organization concerned with the general quality of life in Cleveland Park, it must have a broad base of community support. We will need more sustained membership support from all residents, not just those interested in historic preservation. We will need new people with ideas and energy to become active on our board of directors and a steady income stream to support community-wide activities. We now employ one paid, part-time professional, but others may be needed for these expanded functions.

It is up to the membership to decide what CPHS activities will be. If you feel that broader community involvement will improve our urban life, please speak to your neighbors about joining our organization.



Sheldon Holen
President

RESEARCH REVEALS NATIONAL IMPORTANCE OF TREGARON GROUNDS *(continued from page 1)*

EXCERPTS FROM THE ROBINSON REPORT

"The significant 20th-century estate known as Tregaron, located in the Washington, D.C., neighborhood of Cleveland Park, was first named the Causeway by its original owner, James Parmelee, in reference to the long, stone bridge or causeway that leads to the mansion house from Kingle Road. After Parmelee and his wife passed away, the site was purchased by Ambassador Joseph Davies and his wife, Marjorie Merriweather Post. Davies renamed the property Tregaron after the village in Wales where his mother was born. The entire property is listed in the National Register of Historic Places.

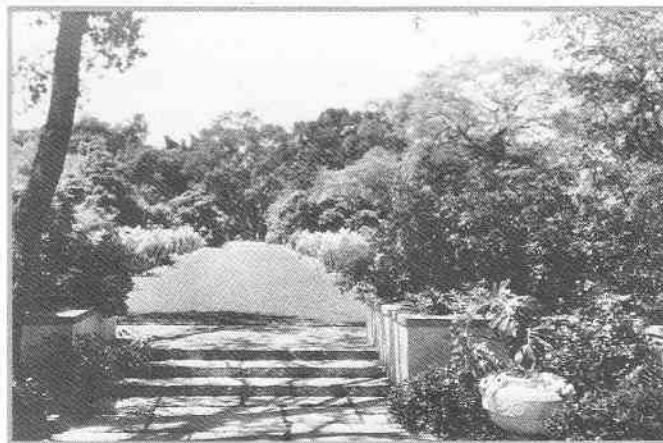


Meadow, looking west to the Washington National Cathedral

"After careful examination and study he decided to recommend the brow of the hill as the best position because, with a little cutting, a broad open vista would extend over the valley and far beyond the property line....There are many delightful vistas in the place, some that are accidental and others that are deliberately constructed for various practical and obvious reasons."

"The buildings on this large country estate were designed from 1912 to 1914 by Charles Adams Platt, the premier architect of the American Country House Movement in America. Tregaron was the only residential commission of this master architect in Washington, D.C. Collaborating with Platt on the design was noted landscape architect Ellen Biddle Shipman, who provided planting plans for the gardens and grounds. Their design was based largely on Beaux Arts principles, aligning the buildings and formal garden in axial relationships to each other, relying on design principles to optimize views and vistas.

Much of Platt's original work, including buildings, circulation patterns, and hardscape features, survives. The design of the formal garden...west of the mansion house, is attributed to Platt, and survives intact. Significant aspects of Shipman's plantings survive throughout the site."



Informal Terrace

"Standing under that main portico looking westerly we find ourselves entertained by first a walled garden, beyond that again the long vista planted with evergreens leading to a little figure...giving relief to the wild foliage and access to domestic quarters such as drying yard, vegetable garden, gardener's cottage...."

ALMOST FINISHED! MACOMB PLAYGROUND RENOVATION ENTERS PHASE TWO

by Rachel S. Cox

On October 25, 1998, more than 100 Cleveland Park neighbors gathered at Macomb Playground for a contemporary version of the traditional "barn raising." Supervised by four representatives from Kompan, the manufacturer of the colorful new play equipment, and fortified by food and drink contributed by neighbors and local businesses, they built a playground for the newly landscaped park. More than that; when it developed that Kompan accidentally had shipped an extra piece of equipment, one that was slated for purchase only after the next phase of fund raising, Macomb Street neighbor Sally Craig organized a collection effort on the spot. The volunteers pledged enough donations so that the \$5,200 wooden play train could be erected instead of returned.

The playground raising marked the culmination of months of fund raising, planning, and preparatory construction work coordinated by the steering committee for the Restoration of Macomb Playground (ROMP), a subcommittee of the Cleveland Park Historical Society. Early last fall, Fort Myer Construction Co. completed structural improvements in accordance with the rehabilitation plan developed by landscape architects Jonathan Fitch and Jeff Lee. ROMP and the D.C. Department of Recreation and Parks then swung into action, putting the finishing touches on the playground in time for the annual Halloween parade and party on October 30th. Extensive landscaping, resurfacing and refencing the basketball court, and spreading a foot-thick layer of protective wood chips throughout the play areas set the stage for the massive volunteer effort.



ROMP cochair Laine Shakerdge Kaufman and her husband, Mark, enjoy the annual Halloween party at much-improved Macomb Playground.

"Seeing so many friends and neighbors working together to install the playground equipment made those many months of hard work well worth the effort," said ROMP cochair Laine Shakerdge Kaufman. "It just demonstrates the wonderful vitality of Cleveland Park and shows why this is such a great place to live."

In March contractor Pete Ganginis completed construction of the park's centerpiece, the whimsical multicolored gazebo designed pro bono by neighborhood artist and architect Dickson Carroll. "The gazebo is nothing short of spectacular," noted ROMP cochair Stephen Turow. "I had seen all the design drawings and observed the construction process, but when I saw the final product, it took my breath away."

"We were particularly thrilled that Pete Ganginis was able to construct the gazebo," Turow added. "In addition to being a talented contractor, he was raised on Macomb Street and has a lifelong association with the neighborhood."

Plans now are under way to install a second Dickson Carroll design, a community message board which will stand near the gazebo. Another neighborhood builder, Peter Lustig, has generously volunteered to construct it, and installation is expected in May.

Thus begins the second and final phase of the rehabilitation effort. Phase two will focus on raising an additional \$40,000 to purchase and install more play equipment—two large climbing structures to entertain older children safely away from the toddlers and a teeter-totter for younger children—and additional trees and shrubbery.

During phase two ROMP will benefit from the talents of three new steering committee members: Serena Wiltshire, Katy Harvey, and Susan Barocas. Laine Shakerdge Kaufman will be less involved due to myriad other professional and community obligations.

(continues on page 4)

WEB SITES WORTH A VISIT

#1: Information available on the web site of the Historical Society of Washington, D.C., ranges from background on the historical society itself and current HSW activities to research materials housed in their library and the progress of the City Museum proposed for the former Carnegie Library on Mount Vernon Square. Find the site at www.hswdc.org.

#2: A new web site hosted by the University of Maryland serves as a guide to research materials for architecture and the built environment located in metropolitan Washington, D.C. The reference work is an update and expansion by the Latrobe Chapter of the American Society of Architectural Historians of the 1982 reference book *Architectural Research Materials in the District of Columbia* by Sally Hanford. Check it out at www.lib.umd.edu/Guests/DCARCHres.

Cleveland Park Voices is published twice yearly by the Cleveland Park Historical Society and distributed as a benefit to its members.

Editor

Rachel S. Cox

Designer

Laurie L. England

Printer

Hagerstown Bookbinding
& Printing

♻ Recycled paper

Comments, suggestions, questions, compliments, and criticism are all welcome. Please send them to the Editor at P.O. Box 4862, Washington, D.C. 20008.

READER'S QUERY



For many years, one of the harbingers of spring in Cleveland Park was the first spotting of **Jimmy, the fruit and vegetable vendor** who had a stand on the Macomb Street sidewalk opposite the Giant parking lot. Jimmy showed up with the first crocuses, selling daffodils, asparagus, and new potatoes. As the weather warmed up, the produce changed. For us, the high point was the arrival of gorgeous strawberries, cantaloupes, and Silver Queen corn.

We always checked what Jimmy had before we went to the neighborhood grocery stores. He repaid our loyalty by doing little favors, like saving six pints of strawberries for us one evening when we were having a dinner party and waiting for us to pick them up long after the rest of his produce was sold. He always selected our cantaloupe so that it would be perfectly ripe when we were ready to eat it.

In the spring of 1998 we were saddened to see that Jimmy had not returned for the new season, and we wonder if anybody knows what has become of him.

Bert and Mary Cooper
Porter Street

Readers with information, or queries of their own, may send them to Editor, Cleveland Park Voices, P.O. Box 4862, Washington, DC 20008.

MACOMB PLAYGROUND RENOVATION ENTERS PHASE TWO (continued from page 3)

"Laine has been the inspiration and motivation behind the incredible success that ROMP has achieved so far," said Stephen Turow. "While she cannot be replaced, we are fortunate to have such dynamic and creative new people to help us complete the project."

Already, plans are afoot for a June 5th festival at the playground. Volunteer opportunities abound for fair planners, publicists, bake-sale bakers, and all manner of festival-day helpers. ROMP has raised \$5,000 of the funds needed to complete the rehabilitation and has identified funding sources for the remainder. Volunteers are also needed to draft grant proposals for submission to the identified sources.

To celebrate ROMP's success CPHS will hold its annual meeting at Macomb playground on Wednesday, May 12th. Among the activities will be public recognition of six people whose efforts have been essential to the project's success: Cleveland Park residents Laine Shakerdge Kaufman, Dickson Carroll, and Dick Jorgensen; landscape architect Jonathan Fitch; Diane Quinn of the D.C. Department of Recreation and Parks; and Juanita Peterson, the D.C. Recreation Specialist who watches over the park daily.

"The park is again a wonderful resource for the community," said Sheldon Holen, CPHS president. "We look forward to celebrating this terrific accomplishment and recognizing the people whose efforts made it possible." For more information about making a contribution or volunteering for ROMP, call Katy Harvey at (202)364-4346.



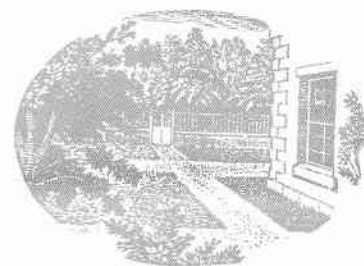
Gazebo by Dickson Carroll

CPHS GARDEN TOUR OFFERS RARE OPPORTUNITY TO STROLL 12 CLEVELAND PARK GARDENS

The first (and we hope annual) Cleveland Park garden tour winds through gardens in a variety of settings—from a woodland ravine to a container garden, from old to new, formal to casual. Gardens were selected that reflect an individual aesthetic, whether designed by the owner or with the help of a landscape architect.

The self-guided tour begins at Cleveland Park Church, 34th and Lowell Streets, and runs from 1 to 5 p.m. A Mother's Day reception follows at the church: tea and goodies served by the men of the church.

Tickets purchased in advance are \$10 each for CPHS members, \$12 for nonmembers. Send the form below, along with a check made out to Cleveland Park Historical Society, to Mary Jane Glass, 3110 34th Street, NW, Washington, DC 20008. Tickets also are available at the Cleveland Park Bookshop, 3416 Wisconsin Avenue, and at Cleveland Park Liquor, 3423 Connecticut Avenue. They will cost \$15 each at the door. For more information, call Mary Jane Glass at (202)686-3082.



Please send me _____ tickets for the Cleveland Park Garden Tour at:
☐ \$10 for members ☐ \$12 for nonmembers _____ Total enclosed

Name _____

Address _____

City, State, and Zip Code _____

Daytime Phone _____

Evening Phone _____

CPHS TAKES POSITION ON PROPOSED ATHLETIC FACILITY AT NATIONAL CATHEDRAL SCHOOL

by Rachel S. Cox

Since October 1998 the CPHS Board of Directors and Executive Committee have devoted much time and attention to the National Cathedral School's proposal to build an athletic facility on the site of the tennis courts at 34th Street and Woodley Road. It has been discussed extensively at every regularly scheduled meeting and at a special board meeting on the subject in January. NCS made a presentation to the Board in November and at an open meeting organized by CPHS for the neighborhood in December.

In April CPHS sent a letter to the Board of Zoning Adjustment (BZA) in anticipation of a BZA meeting to consider the project. The letter stated CPHS's support for the recommendations of the Architectural Review Committee and its continuing concern about the project's potential nonarchitectural impacts on the neighborhood. Here are the highlights:

"The Architectural Review Committee of the CPHS considered the [Cathedral's] plans...at two meetings and submitted their recommendations to the staff of the Historic Preservation Review Board. Considering primarily the architectural aspects, the ARC did not oppose the project, but urged specific modifications to improve its architectural impact on the neighborhood. These recommendations were specifically endorsed by the CPHS board, and we hope that the BZA will review...them.

"CPHS recognizes NCS's need for athletic facilities and its efforts to engage its neighbors in discussions and negotiation. The Cathedral has rights as a property owner and responsibilities as a neighbor and as the steward of a National Historic Landmark. We trust that the Cathedral does not intend to cause any substantial deterioration of the peace and beauty of the historic Cathedral Close neighborhood.

"However, any project the size of this one has substantial potential for adverse impacts on the neighborhood. CPHS is concerned that the BZA address issues of automobile and bus traffic, parking, noise, lighting, intensity of use, possible commercial use, and hours of use. NCS has asserted that the project will neither create nor aggravate such problems, but CPHS is not aware of any impartial studies which support these assertions.

"CPHS urges the BZA to assess whether these factors have been adequately considered and whether the proposed plans and restrictions on use should be further modified or limited, in order to ameliorate potential adverse impacts in coming years. Further, CPHS endorses the conditions which ANC 3C specified in its resolution of conditional support for the project after its February meeting on the topic."

For additional details, please contact Judy Hubbard Saul at (202)363-6358. ☺

A FOND ADIEU TO CAROLYN GUTOWSKI

by Judy Hubbard Saul

As many of you know, mismanagement by some of the city's **Advisory Neighborhood Commissions** (ANCs) has resulted in severe budget cuts for the entire ANC program. Our ANC-3C (Cathedral Heights, Cleveland Park, Massachusetts Avenue Heights, McLean Gardens, and Woodley Park) is one of the best managed and most effective, if not THE best, ANC in the city. Kudos go to all our hardworking ANC commissioners, who continued to meet despite the hardships of working without a budget.

Unfortunately, the budget cuts forced **Carolyn Gutowski**, the ANC staff person for the last six years, to resign. It is a great loss to our commissioners and to our neighborhood. Carolyn very ably ran the ANC-3C office, assisting the commissioners with myriad administrative tasks and helping neighbors with their complaints. She will be sorely missed. ☺

CELEBRATE D.C. BEYOND THE MALL



CPHS is a founding member of the **D.C.**

Heritage Tourism Coalition, a grassroots organization dedicated to strengthening the image and economy of the District by engaging visitors in the diverse heritage of the city beyond the monuments.

With the hiring of interim executive director and Cleveland Park neighbor **Kathy Smith**, the organization, now comprising more than 70 cultural and community organizations, enters a new phase. The official launching will take place on Thursday, June 3rd, at a gala cocktail reception at the Convention Center (900 9th Street, N.W.) from 6 to 8 p.m. Among the promised activities:

- ★ "A New Story about Washington, D.C.," a brief slide presentation by Kathy Smith
- ★ Celebration of the publication of "Capitol Assets," a report on Washington's off-the-mall heritage tourism sites
- ★ Showcasing of the new "Welcome to Washington Information System" at the Convention Center

For more information about the Heritage Tourism Coalition or about obtaining an invitation to the reception, contact Kathy Smith, (202)296-1811.

THE CLEVELAND PARK CLUB AT 77

Celebrating its 77th anniversary this year, the Cleveland Park Club is a neighborhood resource for members and nonmembers alike. A few new memberships are now available to Cleveland Park neighbors. The initiation fee is \$275. Annual dues are \$350. For information about joining, call Betsy Vieth at (202)364-8505.

Members can use the heated swimming pool, have sign-up priority for the summer day camp and swimming lessons, and enjoy family activities all year round.

Of interest to nonmembers:

- ✓ The vintage clubhouse at 3433 33rd Place may be rented for small parties and meetings. Contact resident manager Elizabeth Barkin, (202)244-9332.
- ✓ Lifeguard training is offered each summer for young people aged 15 and up. Contact Mike Iadarola at (202)537-1419.
- ✓ Exercise classes are held, including strength training and Tai Chi. For schedule information, call Elizabeth Barkin, (202)244-9332.
- ✓ A series of four fitness workshops are scheduled for Wednesday nights in May from 7:30-8:30. Conducted by personal trainers Cherie Roberts and Gail Stark, they aim to put participants on track to a healthier life. Contact Amy Lear White at (202)745-0191.

CLEVELAND PARK NOTE CARDS NOW AVAILABLE



The Zebra Room lives...in a sketch of neighborhood shops that graces one of the note cards produced for the Historical Society by neighborhood artist Eleanor Oliver. The white, 4 by 5 1/2 inch note cards are available in two series of five drawings. The commercial series includes views of John Eaton School, the firehouse, and Macomb Street shops. The house series features five historic houses of various architectural styles. A single, wider card bears a line drawing of the Park and Shop (above). Each five-card series costs \$5; the single card costs \$1. All proceeds benefit the historical society.



DON'T MISS THE STYLE GUIDE

Find new meaning in what you see as you stroll Cleveland Park's beautiful byways. Entertain and inform your out-of-town visitors. *Cleveland Park: A Guide to Architectural Styles & Building Types* illustrates and explains characteristic building features, identifies examples, and places them in historical context.

Published last year by the Cleveland Park Historical Society, the 27-page paperback costs \$8 for members, \$12 for nonmembers, plus \$3 postage and handling for one copy, \$1 more for each additional copy.

To order the style guide or note cards, complete the form below and mail it, with a check made out to the Cleveland Park Historical Society, to CPHS, P.O. Box 4862, Washington, DC 20008. For more information, call (202)363-6358.



Please send me: _____ Commercial note cards @ 5 for \$5
 _____ House note cards @ 5 for \$5
 _____ Park & Shop note card @ \$1
 _____ Style Guide @ \$8 or \$12
 _____ Postage and Handling
 _____ Total Price

 Name

 Address

 City, State, and Zip Code

 Daytime Phone

 Evening Phone

PHILIP STONE BEQUEST BENEFITS HISTORICAL SOCIETY

Philip J. Stone was born in the house that his parents had built at 3023 Macomb Street when Cleveland Park was a new development on the outer fringes of Washington. He attended John Eaton School and Central High School. After receiving an MA in library science and public administration from the University of California, Berkeley, he returned home with his wife, Catherine, and built his career working for the D.C. Public Libraries. He lived on Macomb Street until, six years after Catherine's death, he could care for himself no longer and moved into a nursing home. When he died on December 28, 1998, at the age of 90, much of his estate went to the causes that had mattered most to him. The Nature Conservancy received his house (now resold), and the Potomac Appalachian Trail Club and the Cleveland Park Historical Society each received \$26,000.

"We were surprised and extremely grateful for the gift," said CPHS president Sheldon Holen. "This generous contribution will enable the society to rebuild our 'war chest' and consider new initiatives." The funds will not be used for general operating expenses but have been invested as a hedge against future development battles. 🌿

For more information about the life of Philip Stone, see the profile by Rives Carroll in the Spring 1989 Voices and the Cleveland Park Neighborhood History Project publication Cleveland Park Voices: A Social History. Both are available in the Cleveland Park Library.



Catherine and Philip J. Stone, c.1970

THE PRESERVATIONISTS ARE COMING!

This year's premier national event for preservationists will take place here in Washington in October. The **1999 National Preservation Conference** sponsored by the National Trust for Historic Preservation, among others, is expected to draw upward of 2,000 people from across the U.S. Among the attractions: nationally renowned speakers; educational sessions with experts on such varied topics as sprawl, heritage tourism, cultural diversity and preservation, and commercial district revitalization; tours of Washington sites and neighborhoods connected with important preservation issues and events; and partying in historic settings. Professor Richard Longstreth of the George Washington University preservation program and CPHS executive director Judy Hubbard Saul will lead "field sessions" in Cleveland Park.

The national conference is a great opportunity to learn more about preservation from a national perspective and draw inspiration from the experience of others. One way to attend is to become a volunteer. The National Trust needs helpers to assist with registration, to staff the hospitality booth, and to monitor education sessions with Trust staff, among other tasks. Volunteers receive free admittance to most conference activities for the same number of hours that they work. Volunteer applications are due by August 9th.

For more information about volunteering, call Megan Will at (202)588-6092. For other information, call the National Trust at (800)944-6847, or send an e-mail to conference@nthp.org. Registration costs \$245 before July 15th, \$315 thereafter. Student registration is \$100. Discounts are available for groups of three or more registrants. 🌿



COMMUNITY CALENDAR

APRIL 17 & 18

Friends of Cleveland Park Library Book Sale

12-4 p.m.
Cleveland Park Library
Contact Jill Bogard,
(202)966-2847.



APRIL 24

John Eaton Annual Fund-Raising Auction

6 p.m., preview 2-4 p.m.
Absentee bids accepted.
Austrian Embassy
3524 International Ct., NW
Contact Suzanne Windle,
(202)363-4488.

APRIL 26

ANC 3-C Meeting

8 p.m.
2nd District Police
Headquarters, Idaho Ave.
The Advisory Neighborhood
Commission meets on the
fourth Monday of every
month.
Contact Ann Loikow,
(202)363-6658

MAY 12

Annual Preservation Garden Party

Woodrow Wilson House
2340 S Street, NW
Contact (202)387-4062,
extension 15.

JUNE 5

ROMP Fun Fair

Macomb Playground
Rain date June 6th
Contact Serena Wiltshire,
(202)966-0904.



JUNE 5

Cleveland Park Citizens Association Meeting to Elect Officers

10:15 a.m.
Cleveland Park Library
CPCA meets on the first
Saturday of every month
except July, Aug., and Sept.
Contact Gregory New,
(202)244-7384.

CLEVELAND PARK DAY UPDATE



Despite inclement weather, participants agree that **Cleveland Park Day 1998 was a success.** CPHS, Connecticut Avenue merchants, the Cleveland Park Citizens Association (CPCA), and ANC 3-C pooled talent and resources to sponsor the almost-annual event on Sunday, October 4th. T-shirt sales and a CPCA-sponsored raffle yielded more than \$2,200 for the Cleveland Park firehouse. Firefighters now enjoy two long-sought TVs and 10 new chairs which were purchased with the money.

Already plans are afoot for **Cleveland Park Day 1999** next October. Anyone interested in contributing in any way to this celebration of our neighborhood should call Judy Hubbard Saul at (202)363-6358.

JOIN THE CLEVELAND PARK HISTORICAL SOCIETY

CPHS was founded in 1985 by concerned residents seeking to prevent overdevelopment of Cleveland Park's commercial corridors and to preserve the character of this historic neighborhood. It continues to be active in preservation, beautification, public education, and community betterment. To join us in this work, please send this coupon, along with a tax-deductible contribution, to:

Barbara Stout, Membership Chair
Cleveland Park Historical Society
P.O. Box 4862
Washington, DC 20008

Please make checks payable to the **Cleveland Park Historical Society**. All but \$4.00 are tax deductible as allowed by law.

YES! I wish to become a member of CPHS at the following level:

- | | |
|-------------------------------------|------------------------------------|
| <input type="radio"/> \$30 Member | <input type="radio"/> \$250 Patron |
| <input type="radio"/> \$50 Friend | <input type="radio"/> \$500 Angel |
| <input type="radio"/> \$100 Sponsor | |

Name _____

Address _____

City, State, and Zip Code _____

Daytime Phone _____

Evening Phone _____

I would like to volunteer to help with:

- | | |
|---|--|
| <input type="radio"/> Tree planting | <input type="radio"/> Fund raising |
| <input type="radio"/> Neighborhood beautification | <input type="radio"/> Architectural Review Committee |
| <input type="radio"/> Special event planning | <input type="radio"/> Clerical/mailings |
| <input type="radio"/> Photography/graphic arts | <input type="radio"/> Macomb Playground Rehabilitation |
| <input type="radio"/> Newsletter | <input type="radio"/> Other _____ |

CLEVELAND PARK HISTORICAL SOCIETY

P.O. Box 4862
Washington, D.C. 20008
(202)363-6358

NON-PROFIT
ORGANIZATION
U.S. POSTAGE
PAID
WASHINGTON, D.C.
PERMIT NO. 1415

DON'T MISS...

* Cleveland Park
Garden Tour
May 9

* CPHS Annual Meeting
May 12